

CHAPTER 9

PHYSIOGNOMY IN TWELVE ASPECTS OF LIVING

DOMAIN OF GOOD AND BAD FORTUNE

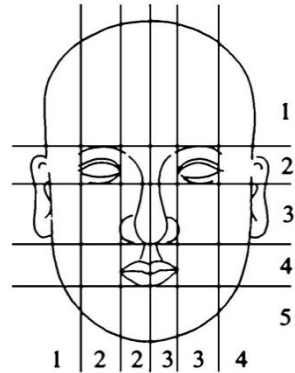
Using Good Karma and Blessings to Overcome Calamity

Good blessings come from two sources. One is the good karma inherited from parents, grandparents and ancestors. The other is one's own daily good and charitable deeds; i.e., helping less fortunate people and avoiding evil activities. If one believes in reincarnation, then this life's blessings and bad karma are also due to the blessings and bad karma accumulated in previous lives. Blessings inherited from ancestors are revealed through beautiful features, a good voice and good colors, and plentiful countenance from a very young age. Blessings from one's own good deeds are also shown in beautiful features, voice, colors, and countenance, but in this case from the age that one begins to be able to distinguish between right and wrong. With these blessings, the form will become more beautiful, the voice more reverberating, the colors brighter and the countenance stronger and fuller.

Blessing Symbol

Steady versus Temporary Business

1. The wealth mounds located in cells (2,4), (2,3), (2,2) or (3,4), (3,3), (3,2), are related to basic, steady businesses. A person with these wealth mounds can own or work in businesses such as heavy industries or in steady businesses with a long term presence in the market.
2. The wealth mounds located in other cells are related to short term businesses. A person with these wealth mounds should pursue only short term businesses or businesses based on commissions, or businesses involved in imports or exports.



Suitable Job for a Person with a Thin Mệnh Zone

A person with a thin Mệnh zone will easily succeed in businesses such as construction, land investment, grain, fabric or paper trading. These businesses will also help these people to enjoy better health because they supplement the thinness and the weakness of the thin Mệnh zone.

DOMAIN OF CALAMITIES

Warning signs of calamities can be found in dry hair, a dry beard or dry eye-brows, as well as in: a brown forehead; a brown nose or a brown chin; a white powdered glabella or chin; an overly shiny nose; overstretched skin; concave shapes with bad colors on the Nam Nữ, Thiên Di, Lộc or Danh zone; and in a weakening countenance or a panicky countenance or weak voice. The severity of the calamity can be observed on the Mệnh, Phúc and Đức zones, as well as in the presence of any unnaturally planted features and in the severity of these unnaturally planted features. If there is any sign of calamity, one should first observe the following three areas: love affairs, wealth and fame. These are the most important and most common areas that cause calamities related to the life or death of a person. Remember that destructive physiognomy shapes are the starting

points that trigger a calamity; a weak voice and concave shapes with dark and bad colors, as well as overstretched skin, are signs of an impending calamity; and a weakened countenance is a sign of how severe a calamity will be.

Calamity versus Anxiety Signs

A pale color on the face is a warning sign for a forthcoming calamity or a sign of anxiety. We must not confuse these two situations.

1. A calamity is signaled by a pale color combined with a weakening countenance. A weakening countenance is akin to a flame whose oil is running out.
2. A pale color, signaling anxieties, combined with a panicky countenance, is a warning sign of an insecure or unsettled situation, including a depressed condition or a feeling of intense fear.

Warning Signs of an Impending Catastrophe for the Whole Family

In bad luck years, a father/mother with polished eye-bags could face a fatal calamity with all the members of his/her family. In other years, he/she could face miserable situations caused by his/her family members. In general, the bad years for a person are at ages 31, 33, 37, 41, 43, 47, 49 and 53 of the lunar calendar.

Good Luck, Bad Luck

When fame, wealth, or love arise unexpectedly, one should apply the law of self and karma to find out whether what has happened is a good sign or a bad sign. For example, changing houses could be either good or bad sign.

Impending Jail Term, Accident

When the hair, eye-brows or beard become dry, these are warning signs of an impending jail term or accident.

Signs of Paralysis

Dark concave spots on the Thiên Di zone or white-powdery jaws or overly shiny jaws are warning signs of an impending paralysis.

Red Colored Warning Sign

If a warning sign on a person's face is a red color without a yellow luster, then this person will soon face a calamity.

Fame is Warning Sign

If a person's spouse has a base physiognomy, then if the person suddenly becomes famous, this should be considered as a warning sign of an impending calamity. It is likely that the calamity will happen as soon as the fame arrives.

Excessive Fame is Warning Sign

A person with base physiognomy features should not pursue fame at the national level. Otherwise, a calamity will inevitably come.

Success Followed by Death

Success will be followed by death if a person has a good forehead coupled with unnaturally planted ears or nose, or with death warning colors that have already invaded the Mệnh zone. A person with these features will die right after his/her success.

All Attempts Will Be in Vain

A person whose mouth looks like an upside down boat will never succeed, no matter how hard he/she tries. To lessen the influence of this bad physiognomy, he/she should marry or partner with a person whose mouth has strong muscles flowing around it.

Up-and-Down Life

A person whose nose bridge or whose entire nose has alternating bright areas, dark areas and polished areas will have an up-and-down life.



Pressed Points in Decision-Making

A pressed point is a very fine and solid mound

which is located at the corner of the jaw. A person with a pressed point on his/her jaw has the determination to overcome any obstacles in making a decision because he/she clearly understands how to control himself/herself in daily life so as to survive. A person with cheek muscles that run down toward the mouth or chin, coupled with pressed points will not run heedlessly into calamities. Most scholars have cheek muscles that run down toward the mouth or chin, coupled with pressed points.

Easy to Get into Accidents

A person whose neck and cheeks have the same white colored skin, with no line to differentiate between these two areas, has an overexposed physiognomy. If this person wears clothes that are:

1. White, black, or dark red colors, the accidents are more likely to happen.
2. A light yellow color, or striped, the bad physiognomy will be alleviated.

Accident-Prone Physiognomy

Glued-on eyebrows are a sign that a person is accident-prone. This can lead to a premature death or to dotty behavior, dementia or even Alzheimer's at a relatively early old age.

Excessive Fire Element

An excessive fire element will make the facial skin red and make the voice sharp as if the person were shouting. A person with an excessive fire element, coupled with detached eyelids and thin facial skin, will face a premature death if he/she marries a bony, skinny spouse.

Calamity in Gloomy Area

When warning signs of a calamity make the facial skin color look darker, a gloomy area further increases the chances for a calamity to happen. The darker the area, the higher the chances that a calamity will occur.

Calamity on Rainy Day

Dry skin all over the face, especially very dry skin in a calamity warning area, is a physiognomy sign that a calamity will occur on a rainy day.

Calamity on Deserted Area

A person whose facial skin is pale white, overstretched, and with dark-colored spots everywhere, has an overexposed physiognomy. If this person goes to a deserted area, his/her overexposed physiognomy will contrast more with the surroundings. This increases the chance for a calamity to happen.

Calamity in Populated Area

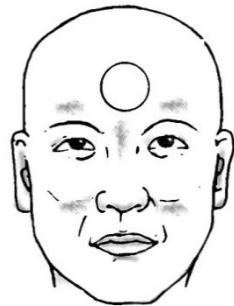
Having a panicky countenance, a calamity sign on the Thiên Di zone, and dark colors on both sides of the Mệnh zone, is a physiognomy of a person who will face a fatal accident in a populated area when away from home. A person with this physiognomy should avoid participating in any events on the street with a group of people.

Calamity on Street

Destructive ears, coupled with a dark-colored Thiên Di zone, are physiognomy features that warn of a calamity that will occur outside of the house.

Calamities around Noon or Midnight

1. A calamity will happen around noon on a sunny day, i.e. between 11:00AM and 3:00PM, if the Danh zone has an extremely bright skin while the glabella and the Mệnh zone are covered with a very dark color.
2. A calamity will happen to a person around midnight, i.e. between 11:00 PM and 3:00 AM, if he/she has yin skin and an overexposed physiognomy. This

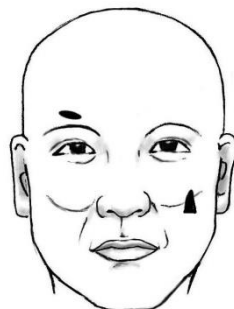


is also true for a man with female characteristics. Such a man should avoid engaging in any conspiracies at night.

Calamities during the Day or Night

Overstretched skin, together with a concave oval or triangular shape on the Mệnh zone will lead to a calamity that can occur at different times of the day:

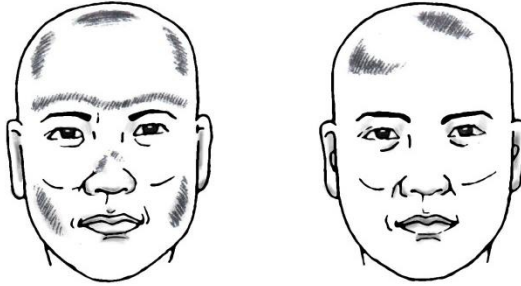
1. If the concave shape has a pale color, and the skin looks weak, unhealthy, and extremely young, then the calamity will happen at night.
2. If the concave shape has a dark grey color and looks dry, then the calamity will happen during daytime.
3. If the facial skin is overstretched and looks weak and pale, the calamity will happen around midnight, especially on a cloudy or rainy night.
4. If the entire face is covered with a dark grey color and the skin is dry and overstretched, then the calamity will happen during the daytime, usually at noontime, and especially on a very sunny day.



The black and white colors associated with calamities are different from the natural black and white colors of the skin. One should observe the color and the countenance at the same time. A black color with a weak countenance will become dark grey, whereas a white color with a weak countenance will become pale white.

Place of Unnatural Death

A person with a brown, polished and unnaturally planted nose, and with a death warning color that invades the glabella and both sides of the Mệnh zone, will die in a populated area. If the death warning color appears only on one side of the Mệnh zone, the person will die in a deserted area.



Die in a populated area

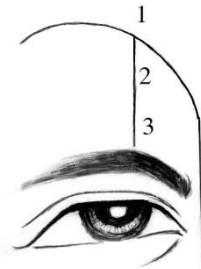
Die in a deserted area

Accidents to the Eyes

Accident happens to the eyes when there are lines striking directly toward the eyes from the hairline or from any points on the forehead under the following conditions: if the forehead is flat, the lines must be curved and if the forehead is curved, the lines must be straight.

Dry and destructive eyebrows are also warning signs of impending accidents to the eyes.

1. The length and clarity of the lines determine if this is a sign of blindness or just a partial loss of vision. If the lines start from the hairline, point (1), the chance of turning blind is 100%. If the starting point for the lines is closer to the hairline than to the tail of the eyebrows, point (2), this is a sign of a partial loss of vision or of a 70% chance of turning blind. If the starting point is closer to the tail of the eyebrows than to the hairline, point (3), it is sign of a less complete loss of vision or of only a 30% chance of turning completely blind. Only starting points (1) and (2), not point (3), are warning signs of accidents to the eyes.



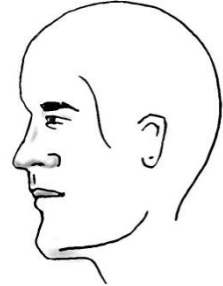
2. Here are some additional cases: if the lines run down and stop in the Nam Nũr zone, the person with this physiognomy will see his/her family break up and will later lose his/her vision. If the lines run down to the eye-brows, the person with this physiognomy will face a partial loss of vision instead of blindness, if his/her family was already broken apart.
3. If the lines are coupled with eyebrow bones that are raised up and swollen, like the eggshells of a chicken's egg, and if the eyebrows are very dry and destructive, the person can become blind or face a serious eye surgery.

Physiognomy of Getting Shot or Stabbed

A person with heavy, unnaturally planted or loose jaws, coupled with a nose erected right in the middle of the face, is likely to be shot or stabbed to death in the trunk of his/her body.

Accidental Loss of Limbs

A very thin line that cuts across the Thiên Di zone is a warning sign that a person can lose a limb by accident. If there are no death warning signs, he/she will just lose the limb.



Accident Leading to Paralysis

A dark grey trace on the Thiên Di zone is a warning sign of an accident leading to paralysis. If the trace runs up and down, like a chain of hills or mountains, the accident will happen in highlands.

Warning Signs of Surgery

1. When one or both eyebrow bones are raised up and swollen, like a chicken's eggshells, it is a sign of an impending surgery. The nature of the skin and the countenance of the eyebrow bones must be observed carefully in this case so as to differentiate these features from eyebrow bones that are just raised up.

2. A nose that is erected from the middle of the face, coupled with a very dry and destructive beard, hair and eyebrows, are physiognomy signs of a person who will have surgery and die during the operation, or at least have to be hospitalized for six months after the surgery.
3. A person with a pig-like nose can also easily require a surgery. If this person is fat, he/she can easily die during an operation performed by a skinny surgeon.

Death While Hunting

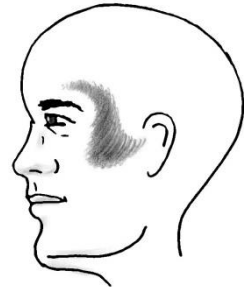
When the area at the end of each eyebrow bone is concave, sunken, lumpy and dark-colored, and when a death warning color has already invaded the Mệnh and Thiềnh Di zones, or the glabella is covered by a



destructive color, or the whole face is covered by a destructive color or the eyes have a panicky countenance, the person who has these physiognomy features will face a fatal accident while engaging in unnecessary killings, such as hunting or fishing.

Death in Battlefield versus Death During Surgery

A soldier/law enforcement agent with facial skin that is overstretched will probably get killed in a battlefield. A patient with overstretched skin all over the supplemental Mệnh zone and the Mệnh zone itself will probably die during surgery. The fatal incident is more likely to happen if there are death features, such as, glued-on eyebrows or an unnaturally planted nose.



Calamity in Mountainous or High Plateau Areas

When the flesh around a person's eyes is homogenous and the skin color is uniformly dark, the person is said to have "window" eyes. When these eyes are open, one sees light flashing out of these eyes

and the color around the eyes becomes darker. The brighter the flashing light of the eyes, the darker the area around the eyes is. The level of the darkness determines the severity of the calamity.

1. Window eyes are physiognomy features associated with suffering a calamity in a mountainous or high plateau area.
2. A person whose window eyes look watery or sparkly can easily suffer a calamity related to a love affair in a mountainous or high plateau area. The same is true for a person who has window eyes coupled with a Nam Nūr zone with a dark color, pockmarks, concave ovals and/or concave triangles.
3. A person with window eyes coupled with dark purple green traces that run up forcefully from the lower parts of the cheeks has physiognomy features that indicate a blood disease or a calamity that causes a fatal loss of blood in a mountainous or high plateau area. These calamities can be caused by a fall, or by the consequences of a love affair, fame and/or money. Most of the time the calamity is due to a love affair.
4. In order to ward away calamities associated with window eyes, one should be on a vegetarian diet and do more charitable work. If a person with window eyes has to go to a mountainous or high plateau area, he/she should be on a vegetarian diet for at least 7 days in a row before his/her departure, and upon arrival, he/she should not let any sex partner, including his/her spouse, enter his/her bedroom and he/she should be careful with regard to any activities related to a love affair.

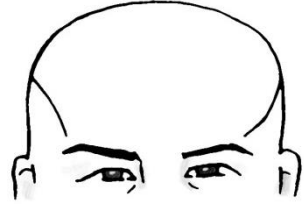
Sick Bird Physiognomy

1. A person who has a bird physiognomy should not go to a mountainous or high plateau area when sick because the sickness will get worst very quickly.

2. The above person could die if he/she goes with a spouse who has detrimental physiognomy features.

Calamities Caused by Fortune and Fame

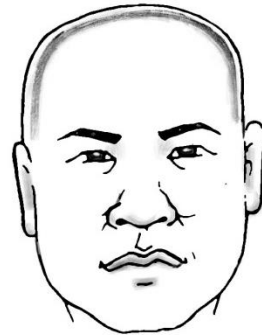
A person with fully developed Hưởng zones that are divided into two parts, with a dark color in the lower part has physiognomy features leading to a calamity that reflects an unfair division of fortune and/or fame.



Leaving Home Shall Meet a Savior

A person who has a “leaving-home-shall-meet-a-savior” physiognomy has a bright, clear and smooth band that runs around the edge of the forehead, close to the hairline, all the way down to the upper part of the ears. Leaving home means taking a trip to a faraway place, such as leaving the country or taking a trip at least 100 miles away from home. A savior means a person who can help the subject escape from a calamity, including from a fatal accident.

1. A person with a physiognomy of dying while eating in a restaurant or dying inside a theater can be even saved if he/she has the “leaving-home-shall-meet-a-savior” physiognomy. However, the saving effect of this physiognomy will be more effective if the person stays inside his/her hotel, and does not go to a movie or restaurant for at least one day after he/she arrives.



2. The waiting time of one day or more depends on the severity of the calamity that lies ahead and also is meant to remind the person that he/she has to be careful at every single step to avoid a calamity.

Accident Happens When Leaving Home

A person with skin on the Thiên Di zone, including the top of the cheek bones, which suddenly becomes abnormally bright while many other features have dark colors or a weakening countenance, will encounter an accident if he/she leaves his/her home. The same is true when the Thiên Di zone is covered with a dark grey color.

Death at Place with Roof but not at Person’s Home

A dark Thiên Di zone with real estate squares, coupled with white powder-colored concave ovals that already cover some areas of the Mệnh zone and some areas of the Thiên Di zone (close to the hairline at the lower corners of the forehead), are warning signs of a calamity, including possibly death, in the evening and at a place with a roof that is not the person’s home. The calamity happens indoors and not on the street because the Thiên Di zone is dark and has real estate squares. The calamity happens in the evening because the concave oval has a white powdery color.



Fatal Accident Triggered by Going Out with Lover

A dark grey color covering the Mệnh zone, Nam Nữ zone and Thiên Di zone, coupled with dry and destructive eyebrows, a shiny nose, or jaws with a weakening countenance, are death warning signs for a person who goes out with a lover.



Brown Color and Bad Luck

A brown color on a calamity feature will increase the severity of an accident or unfortunate incident ten times more. For example, the damage associated with polished eye-bags will increase tremendously when this feature is covered with a brown color.

Brown Nose

A brown nose is a warning sign for a jail term, bankruptcy or sudden death.

1. When the whole nose is brown, it is an end-of-life physiognomy. Therefore, the active life of a person with this physiognomy will end via imprisonment, bankruptcy or a sudden death.
2. A nose with many brown-colored pieces is a warning sign that the person will suffer one problem after another for the rest of his/her life.
3. A nose covered with a mix of brown pieces and wealth mounds is a warning sign of having alternating fortunes and calamities, one after another. If the wealth mound appears on the nose followed by a brown trace, this is a sign that the person will receive a fortune followed by a calamity.

Signs of Being Lamé

1. An overstretched Thiên Di zone skin or a dark line cutting across the Thiên Di zone, or a dark concave triangle or oval in this zone are signs that the person is likely to become lame or to experience pain when moving.
2. The person can also become lame if there are white powdery, shiny, overstretched, dark grey or concave jaws.
3. When the Thiên Di zone or jaws have lame signs and the person has dry and destructive hair, beard and eyebrows, these are signs of a severe accident that can cause a loss of limbs.

Violent Death

1. A person with rigid, erect ears will face a horrible death if he/she achieves a big success in his/her career or fortune, especially if he/she is still immature.
2. An unnaturally planted, heavy nose, coupled with overstretched skin, is a sign of being beaten to death.

3. A brown, heavy and rigid nose erected from the middle of the face, coupled with overstretched skin, indicates that the person with these features is likely to be stabbed to death in the abdomen.
4. A person with a thin Mệnh zone and detached eyelids can be beaten to death with a single blow if he/she loses his/her temper during unlucky periods of life.

Destructive Glabella

What will happen to a person with a destructive glabella (that is very dry and covered with dark green color) when he/she receives more power? If this person currently has some kind of life and death powers over other people, then it is acceptable. However, if this person does not currently hold this type of power, then the destructive glabella indicates that he/she will face a horrible death.

Complications While Giving Birth

Pregnant women with a weakening countenance and white powdery eye-bags may face severe complications during delivery.

Falling Down

Dry and destructive eye-brows, coupled with destructive ears, are physiognomy features that presage a fatal fall. The person with this physiognomy can end up being immobile for months or being lame for the rest of his/her life.

Intelligent but Die Young

A short or small body, coupled with overexposed skin or an overexposed voice, is the physiognomy of a person with intelligence but with a short life span.

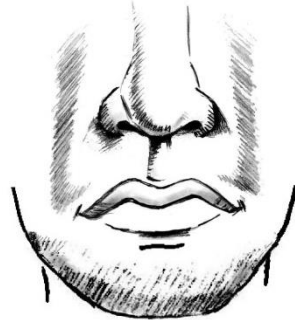
Prone to Accidents

Perked up ears, overexposed skin and a pointed head, like a bird's head, is a set of overexposed physiognomy features that indicates a person who is prone to accidents. A person with an overexposed

bird physiognomy can easily encounter calamities in mountainous areas.

Accident to Children

1. A person whose chin has a dark grey color or no countenance has a physiognomy that presages getting into an accident with his/her children.
2. If, as shown in the picture, the flesh of the two areas indicated on the person's face is very thin, with a dark color or no countenance, then this is a sign of a terrible accident involving children.



Death is Imminent

1. Death is imminent for a person with overstretched skin and a shiny nose, or with one or more unnaturally planted features coupled with a shiny nose.
2. As long as the nose still has some wealth signs, death cannot come immediately, even if the person has overstretched skin or some unnaturally planted features.
3. If a death color covers the Mênh zone, then the death will almost certainly be due to an accident or sickness.
4. If a death color covers the glabella or eye-bags while the person is sick, then this is a sign of impending death.
5. A powdery white glabella or powdery white jaws and no sign of wealth, are signs of an impending calamity or death, even if the person is healthy. If these features are coupled with overstretched skin, then the death will occur within 15 days.

6. Overstretched skin, powdery white skin or muddy-like flesh, when coupled with a powdery white glabella or powdery white jaws, are signs of imminent death. With these signs, even if the person looks healthy, the person will still die in 30 days or less.

Avoiding Surgery, Injection, Acupuncture

A person with the following features should avoid surgery, injections and acupuncture:

1. A medium-sized woman, with straight shoulders and deep eyes, who is soft spoken or has a sharp or high-pitched voice.
2. A man with swollen and overstretched flesh on his forehead, close to the hair-line.
3. A fat and young person with white overstretched babyish skin and a triangular nose, one or more unnaturally planted features, loose jaws, or a face covered by dark color.



Death Sign

The death sign can appear anywhere. The location of the death sign indicates where the calamity will occur and/or what kind of calamity will occur.

1. If the death sign is on the Mệnh zone, then imminent death is certain and nothing else is needed.
2. If the death sign is on the Danh zone, then the cause of death is related to fame.
3. If the death sign is on the Thiên Di zone, then the cause of death is related to travel.
4. If the death sign is on the Điền zone, then the cause of death is related to the real estate business or the death will happen at home.

Death by Dismemberment

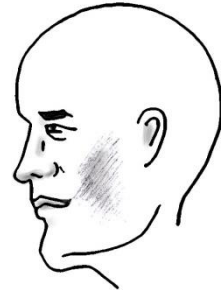
A death by dismemberment is caused, for example, by a mine explosion, airplane crash or a horrible accident.

1. This kind of death is usually linked to unnaturally planted features, or jaws covered with a light brown color, and to overstretched skin.
2. Most of the time, these kinds of deaths happen to a person with unnaturally planted features, such as heavy jaws with brown-colored skin.



Suicide

1. A person who has slightly convex cheeks that run down freely, coupled with loose skin eyelids, has the physiognomy of someone who can easily commit suicide when he/she is disappointed or depressed.
2. A person with the above physiognomy, coupled with a destructive Nam Nūr zone, can easily commit suicide because of problems with love affairs.
3. The following physiognomy features are associated with different types of suicides: A person who commits suicide using drugs will have a pale green color on the corners of the mouth; a person who commits suicide by hanging him or herself will have a suffocation physiognomy; a person who commits suicide by shooting him/herself will have either ears that are thrust into the head or a triangular nose that is thrust into the middle of the face. One should differentiate features that are thrust into as opposed to erected on the face.



Sudden Death

1. A person who has unnaturally planted features will die suddenly whenever warning signs of death appear.
2. A person whose mouth looks like a hole will face a sudden death. A mouth that looks like a hole is an overexposed feature. This feature is best observed when the person laughs.
3. Dry and destructive eye-brows, jaws with a weakening countenance, a triangular nose thrust into the head, an unnaturally planted nose, a shiny nose, a brown nose, and an unnaturally planted chin are possible features of a person who will face a sudden death when a death color and overstretched skin appear.
4. A person whose trunk is short, but whose legs are long and unnaturally planted, will face a sudden death, possibly at a young age.
5. A pole-like physiognomy combined with straight shoulders is considered as an unnaturally planted physiognomy. A person with this physiognomy will face a sudden death. If this person can survive a normally fatal calamity, then he/she will become demented in old age.

Who Is Attacker?

A person who has heavy jaws while his/her other features are normal will be a victim of an attack or an accident caused by others. A person who has heavy jaws as well as other rough, destructive features will be the one who attacks or causes an accident to others.

Death Color on Nam Nūr Zone

A person with a death sign on the Nam Nūr zone will face an accident caused by a sex partner.

Accident, Imprisonment

Dry and destructive hair, eye-brows and beard are physiognomy features of a person facing imprisonment or an accident. The

calamity will be enhanced if the hair, eyebrows and beard are also thick and heavy.

Concubine is Main Cause of Calamity

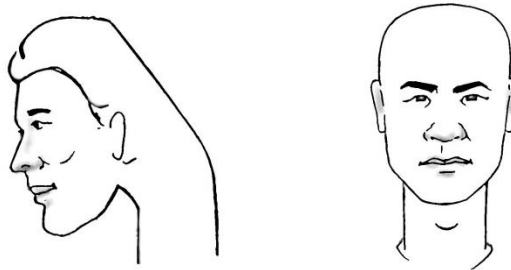
A person with a Nam Nūr zone that has an oval or triangular concave area with brown or dark colors, coupled with dry hair, dry eyebrows or a dry beard, will face imprisonment very soon after he acquires a concubine. If his nose is brown he may also be beaten to death.

Change Personality as Sign of Calamity

A person will face a calamity if he/she changes his/her personality from good to bad.

Beheaded Physiognomy

A person with an abnormally long neck that is awkwardly inserted both into the head and into the body has the physiognomy of someone who may be beheaded. If the neck is only inserted awkwardly into the body, then the person will be subjected to a sudden death.



Mental Problems

A person whose face has the shape of a ploughshare, coupled with muscles that run down from the cheek bones toward the mouth, loose or flat eyelids, cheeks that run down freely or mango-shaped cheeks, especially if they are coupled with thin flesh on the areas from the nose wings to the corners of the mouth, has mental problems due to illusion. Here are some brief explanations for this physiognomy:

1. A ploughshare-shaped face is a sign of self-indulgence.
2. Muscles that run down from the cheek bones toward the mouth are a feature of insanity.
3. Cheeks that run down freely or cheeks with a mango shape are features reflecting uncontrollable self-indulgence.
4. Loose brown eyelids are features of indecision, a hot temper and mental problems.
5. Flat eyelids are features of a person who has the mental ability to commit suicide.
6. Thin flesh covering the areas from the nose wings to the corners of the mouth is a feature of a person who will definitely die even if he/she only attempts to commit suicide.



Killed by Sniper

Ears that are deeply inserted into the head are physiognomy features of a person who can be stabbed or shot in the head when overstretched skin appears.

End of Opportunities, Danger to Life, Loss of Fortune

Brown color on the forehead is a sign that it is not the right time to continue an existing business or to start a new project. Brown color on the nose is a sign of an impending calamity. Brown color on the chin is a sign that one should be extremely careful in all activities, even those involving minimal risk.

Imprisonment Physiognomy

A triangle with a brown color on the area above the eye-brows that is supplemental to the Mênh zone is a physiognomy sign of imprisonment or of being killed.

Death Caused by Surgery Complications

White powdery jaws are physiognomy features that indicate death caused by complications during surgery.

Death around Age 49

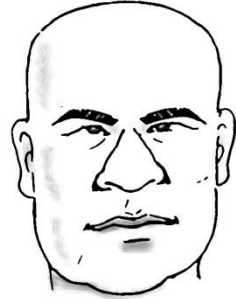
When the tip of the nose is weak, small, covered with dark grey skin and pressed forcefully by the nasal wings, these are physiognomy features of a death around the age of 49.

Drowning Physiognomy

Detached lips with grayish color, overstretched skin and a suffocation feature are physiognomy features of drowning. A man who has this physiognomy usually looks like a woman.

Death During Abdominal Surgery

A person with a triangular nose that looks like it has been pushed into the glabella should avoid abdominal surgery if his/her skin is overstretched. If the pushed feature is powerfully visible, then the person with this physiognomy could face a sudden death as a result of many causes.



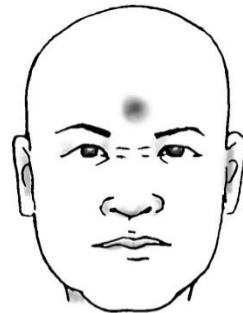
Reducing the Destructiveness of an Unnaturally Planted Nose

The destructive nature of an unnaturally planted nose will be reduced if the ridge of the nose is bumpy. Similar approaches can apply to other unnaturally planted features.

Obstacles and Calamities

A glabella with a dark, grey color, or with a strong red purple color, coupled with a nose bridge which is cut across by lines is a sign of a person who is facing many obstacles and calamities.

1. If the glabella has a round mound, then the obstacles or calamities are just temporary.



2. If the glabella has a concave oval or a concave triangle with a bad color, then the obstacles or calamities will be impossible to overcome.

Unsuccessful Life

A person with one or more facial features whose flesh is not homogenous with the flesh on the surrounding areas, in terms of color, substance and countenance, will have an up-and-down life. The flesh of these features will usually look cold and hard, like a solid piece of dead wood or a piece of metal.

Calamity in Age Range 37 to 43

A small person whose voice is too loud will face a calamity when he/she reaches the age range of 37 to 43, for example a broken family.

Small Stuff Becomes Big Problem

A person with a pole-like physiognomy easily makes small stuff into a big problem.

Sharp and Pointed Weapon

When signs of calamity appear, all unnaturally planted features will become sharp and pointed weapons against this person. Therefore, when signs of an impending calamity appear, the person should avoid being in a situation in which he/she may have one or more sharp and pointed weapons directed against him/her. By this we mean that the person should avoid any object, thing, or person who could play the role of a weapon and thereby inflict the fatal attack that brings about the calamity that the person was facing.

For example: a fat old man/woman with one or more unnaturally planted physiognomy features, who currently has signs of an impending calamity, should not use a skinny, very young and immature person as a doctor or helper, etc., because according to physiognomy laws, a person with such features can be considered as the last sharp and pointed weapon that combines with other

unnaturally planted features to produce the calamity this fat old man/woman was facing.

Peaceful versus Violent Death

A peaceful death physiognomy is composed of:

1. Evenly stretched skin or all loose features and no unnaturally planted features.
2. A spouse who does not have sudden death signs on his/her Nam Nũ zone, such as a concave triangle with sharp edges and a very bad color.
3. Babyish skin.

A violent death physiognomy is composed of:

1. A spouse who has sudden death signs on his/her Nam Nũ zone and bad features, such as (in the case of a man) a hot-tempered wife with detached eyelids and a hoarse detrimental and commanding voice.
2. Any unnaturally planted features.

Group Death

A person who has the areas above the ears, at the corners on both sides of the forehead, fully developed, is considered as having a physiognomy with left and right subordinates. This person will bring a group of people to death with him/her when facing a sudden death. People who have group death physiognomy features tend to group together.

Get Out to Avoid Calamity

A person with a bright, clear and smooth Thiên Di zone or a dark grey Điền zone should get out of the house when facing an impending calamity.

Staying Away from Spouse During a Calamity

A person with a dark and grey Nam Nũ zone should stay away from his/her spouse when facing a calamity, such as a serious illness.

Death Signs Disappear

If a person with confirmed death signs survives a serious, normally death-provoking calamity, then all death signs may disappear from the person's face.

Calamity at Age of 53

Overly heavy jaws are a sign of a sudden death around the age of 53. This sign could appear before the age of 53 and the jaws will become heavier over time. Then around the age of 53 when other additional death signs appear, such as overstretched skin, the fatal calamity will occur.

DOMAIN OF GOOD AND BAD HEALTH

The area covering the bridge of the nose is the *Bệnh* zone. However, health problems can also be detected in many other locations on the face and on the body. The color that indicates health problems is generally a cold blue, but the color on the palms, the gums and the inside of the lips is ink-like red. An incurable health problem usually starts with a weakening countenance in the *Mệnh* zone. This can be seen when the *Mệnh* zone begins to look fleshy and muddy. The level of the person's countenance can be determined by the strength in the look of his/her eyes. If the level is dangerously low, the pupils will look like boiled pig's eyes or raw ceramic eyes. The low countenance level can also be observed from physical weakness and languid behavior that is consistent with exhaustion. A person with a weak countenance always looks very tired and sleepy. At this level of countenance, incurable health problems can easily become acute. Countenance is the most important firewall to defend the body from health problems and from accidents and other calamities. At the last phase of a weakening countenance, death sign colors will appear and death will be imminent.

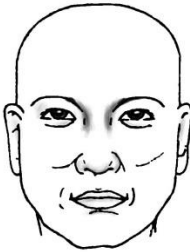
Bad Bệnh Zone

1. A person with a broken nose bridge (*Bệnh* zone) is likely to face a sudden death.

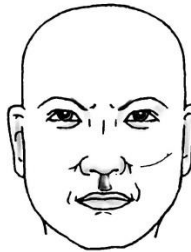
The blessing symbol is a very fine muscle fold running on the cheek. It makes the cheek look like it is being folded. The longer the blessing symbol, the stronger the power of the blessing. A person with the blessing symbol has a “blessing” physiognomy. He/she may avoid some failure and gruesome events and may dissolve calamities for himself/herself and for others. A person with the blessing symbol is very rare.



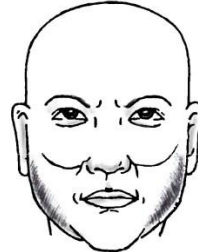
Blessing Physiognomy



Glabella



Philtrum



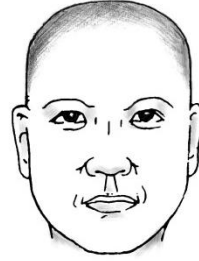
Jaws

If one has a few blessing features, such as a soft and smooth glabella, a full philtrum and jaws, soft hair, good ears, a good forehead, a good nose, a fit body with smoothly sloping shoulders, a good chin, precious eyes and good fortune signs will be able to overcome calamities and avoid a premature death. A child with blessing features, such as soft hair, good ears and a good forehead, can avoid premature death before 7 years of age and can avoid causing calamities to his/her parents before 15 years of age.

Blessings Overcome Calamities

When a person faces failures or calamities, his/her blessings and good karma can overcome these unfortunate events if the person’s glabella is bright, his/her cheeks have pretty wavy muscle fibers, the tops of the person’s eyebrows are bright, the Danh zone is good, the

Hương zone is bright, the Lộc zone has a reddish orange color, the ears look succulent, and the person has a steady countenance and bright, smooth, square mounds in the calamity areas. In a few rare cases, not only are the calamities and failures overcome, but they are also transformed into blessings or great fortunes.



A person with an unnaturally planted nose will not face a violent death if its flesh is soft, bright or as light as a cotton ball. Whenever one sees any unnaturally planted feature, one has to determine immediately whether the feature is very unnaturally planted or only slightly so, whether the base is thick or thin; whether the countenance is full or depleted, clear or muddy, strong or weak; whether the color is good or bad; whether the flesh is stiff or soft; whether the feature is heavy or light, plane or polished; whether its color is light brown or dark brown, and whether the fortune signs, if any, are genuine or fake. If the person has a fortune sign that is genuine, then its flesh is soft with a reddish orange color, but if it is fake, its color is dark, dull and muddy.

Blessings Overcome Death

Let us consider a person with a top half of the face, from the eyes up, that has dry hair, dry eyebrows and a narrow and beveled forehead. Judging by the top half of the face alone, the person is facing a premature death. However, let's suppose that the bottom half of the face is full and has blessing signs and a good color. In this case, instead of death, the person may only have an incurable disease such as diabetes or a permanent disability because of a serious accident.



Calamity Exchanges

A fatal calamity can be exchanged, but a person has to have a lot of good blessings before he/she can do this. Incarceration alone cannot compensate for a premature death. To be able to do this, one must have a lot of good blessings or have survived a serious accident with only a one percent chance of survival.

Good Fortune Signs

The signs of impending good fortune or avoiding calamities appear in many forms, one of which is the appearance of reddish orange skin color areas, especially on the tip of the nose.

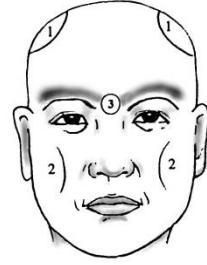
1. Whenever one sees reddish orange skin appearing on the Lột zone, one's bad problems with money, business or even illness will begin to ease. The reddish orange skin will normally first appear on the tip of the nose.
2. Whenever one sees reddish orange skin appearing on any important features, such as the nose, chin, cheeks or forehead, a period of blessings and good fortune is coming; therefore the person will have a better chance to overcome calamities and illnesses. The same is true when the earlobes become succulent, with a reddish orange color.
3. If fortune is appearing on the Lột zone, one will not die even if there is a death sign, because even with just a simple fortune sign, there is already a sign of hope for survival.

Fame Overcome Calamities

Bad colors on the areas above the eyebrows that are spreading onto the glabella, coupled with a premature death physiognomy and dry eyebrows are signs that one is facing an impending incarceration, accident or calamity. However, if the top corners of this person's forehead (1), and the glabella (3) are still bright, then:

1. Good news about fame or career will help him/her to avoid the calamity because the good news will cause the top corners of the forehead (1), and the glabella (3) to become brighter and outshine the areas with bad color.

2. If the bad colors have already covered the glabella, the calamity can no longer be avoided.
3. If a person who has an average physiognomy and the above bad colors, still aggressively pursues fame and/or fortune, he/she will definitely encounter calamities.
4. A person who has the two areas (1) and (2) not only covered by light dark colors but also covered by strong dark colors and by oval and/or triangular hollows, should deny any career promotions or awards. This person should accept these offers only if these promotions and awards cannot be turned down.



Good Forehead Overcomes Premature Death

A good forehead and countenance can overcome a premature death feature. The person's countenance can be determined by the strength of the gaze or the voice. This person should do a lot of good deeds and live an easy life to increase his/her good fortune, good blessings and countenance.

Sunken Forehead and Benefactor

A sunken forehead is a blessed feature. A person with a sunken forehead and two squares on each side of the glabella will surely encounter a benefactor in times of difficulties.

Overcoming a Spouse's Discordant and "Life-Destructive" Features

A person with bad color on the Nam Nür zone, coupled with a squeezed, dented forehead who marries before 28 years of age can easily end up with a spouse with discordant and life-destructive features.

1. In order to avoid this calamity, as long as he/she is between 31-33 years old, this person should avoid sex with the spouse for the first three months of each of these three years, or

alternatively he/she should avoid sex with the spouse one week per month for every month during the entire 3-year period and should not eat at home on these days. This has to be followed strictly in order for it to be effective.

2. A spouse with life-destructive features can cause harm to a base spouse but cannot cause harm to a successful or famous spouse.

Overcoming “Family Destructive” Features

A person with features that are destructive for the family always has lonely and isolated features. Therefore, if this person is successful in business, he/she should not bring family members into the business, especially his/her children, and brothers and sisters. This person should also stay in a separate room equipped with all facilities, not go out of the room at night, not have sex with the spouse at night, and he/she should also eat out by himself/herself one day a week.

Good Thiên Di Zone Overcomes Calamity

A person with a bad color on the Điền zone, but a good color on the Thiên Di zone, should travel so that he/she can meet his/her benefactor, teacher or healer. A person with a bad Nam Nữ zone and a spouse with a life-destructive feature will die sooner if he or she was cared for at home by his/her spouse while seriously ill. If there are real-estate squares in the bad color area, the person has a “dying at home” physiognomy.

Thiên Di Zone Warnings

1. A person with a bad color on the Thiên Di zone, coupled with real estate squares on it, will die at the movie theater or in a restaurant. During the bad fortune period, this person should therefore not eat out or go to the movies a lot.
2. To overcome bad color in the Thiên Di zone, a person should be close to and get along better with his/her brothers and sisters than with other people because blood relatives can help to relieve a bad Thiên Di zone. If this person does not get along very well with his/her own family, but he/she

gets along very well with his/her colleagues, then he/she should not leave the workplace in a life-threatening situation, such as an earthquake, shooting or armed hostage-taking incident, to avoid injuries to the hands and/or feet. In general, when a person's Thiên Di zone has a bad color, the person should stay in one place and avoid going outside as much as possible.

Overcoming Dry Eyebrows, Dry Hair, Dry Beard

To alleviate the adverse effects of dry eyebrows, dry hair and a dry beard, one should apply the best perfume on them every night before going to bed, especially after 11:00 PM. These supplements are based on the Five Elements Law. This person should also do more charitable deeds while applying the perfume.

Overcoming Porcelain Eyes

A person with eyes that look like porcelain, due to lack of countenance, is prone to a premature death. This person usually has a black mole on his/her nape. In order to avoid a premature death, this person should join the clergy or become a monk or nun, even if he/she continues to stay at home. This person should also do a lot of good deeds.

Overcoming Over-exposed Eyes

To reduce the effects of over-exposed eyes, a person with this feature should wear black or white eyeglasses, regardless of whether he/she is nearsighted or not.

Signs of Calamity Invading the Mệnh Zone

All calamities or bad fortune give warning signs before they arrive. One should do good and charitable deeds and adopt an appropriate attitude to deal with the calamities. For example, one can accept a business loss if this can help to eliminate calamities. A person with warning signs of calamities that have not yet invaded the Mệnh zone does not yet face death.